

The background is a deep blue with a complex pattern of white and light blue lines resembling a circuit board or a digital map. Overlaid on this is a large, semi-transparent padlock. The padlock itself is filled with a grid of binary digits (0s and 1s) and some larger, faint numbers. The padlock is positioned slightly to the left of the center. The overall aesthetic is high-tech and futuristic.

CYBERSECURITY'S FUTURE

A VC CISO'S BLUEPRINT FOR A QUANTUM POWERED AI WORLD



WHO AM I?



Bil Harmer
Operating Partner
& CISO
Craft Ventures
@wilharm3

A little about me...

SONY
IT Operations

Virtual Service
Mgr Info Sec



DocSpace Inc
Dir IT Security
Acquired \$650M

Manulife
AVP Architecture &
Technology

SuccessFactors
VP Security
IPO \$500M & Acquired \$3.4B



VP Security &
Global Privacy Officer



GoodData
CSO

Zscaler
CISO
IPO'd @ >\$3B



SecureAuth
CISO & CIO



CRAFT
Craft Ventures
Operating Partner & CISO

1990

1990

1997

2000

2004

2007

2014

2020

2022

2025

Board Member

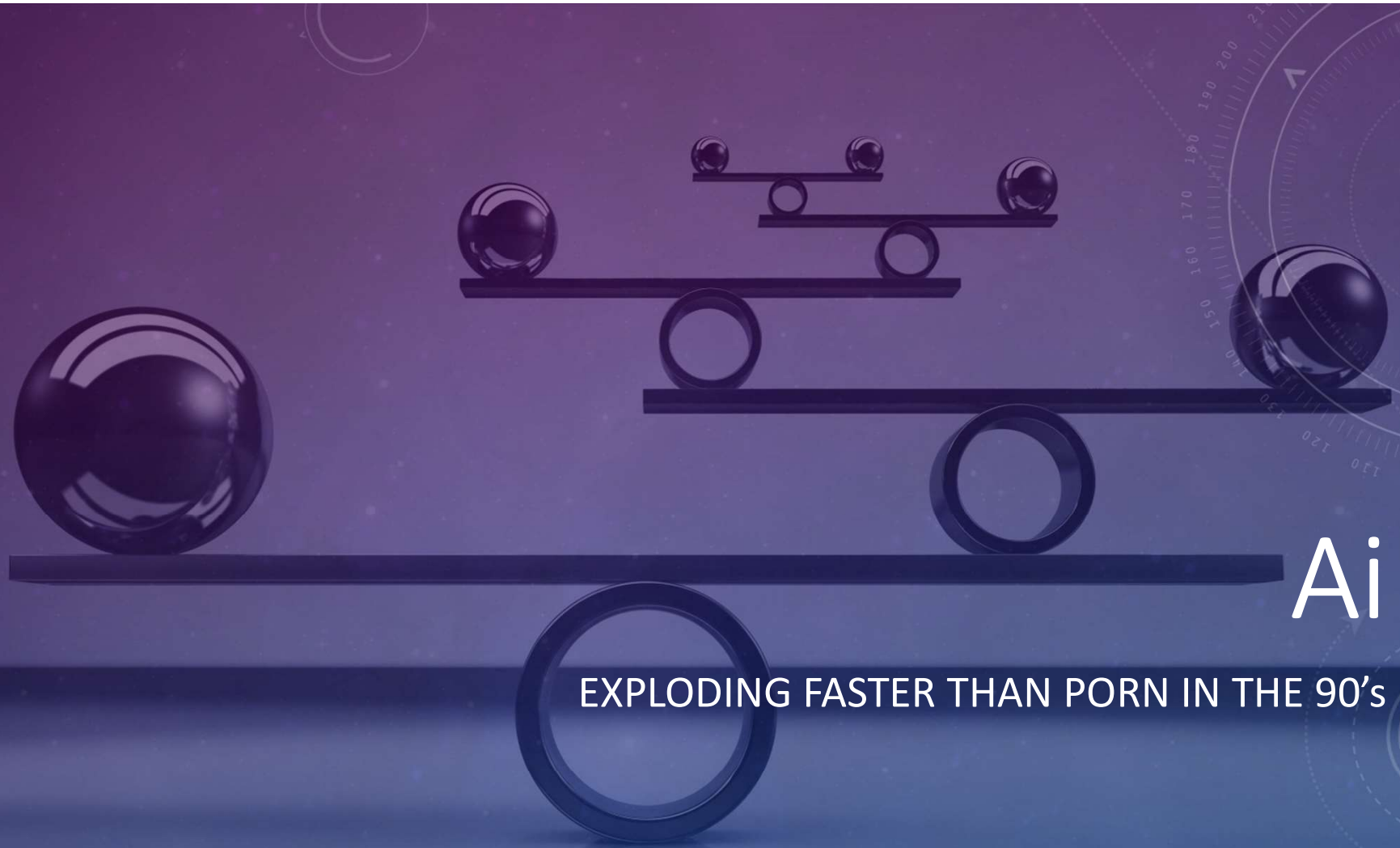
Current: SecurityPal
Prior: SuccessFactors Canda

Advisory Boards

Current: Dune Security, Weagle.AI, SiberX, Trust Science, SecureX.ai
Previous: SheildX Networks, Resolve Systems, GoodData, Adallom

The tech changes I've seen...





Ai

EXPLODING FASTER THAN PORN IN THE 90's

BY THE NUMBERS

AI Growth Rates Globally

67,200 AI COMPANIES

25% IN THE USA

35% USING AI

42% EXPLORING AI

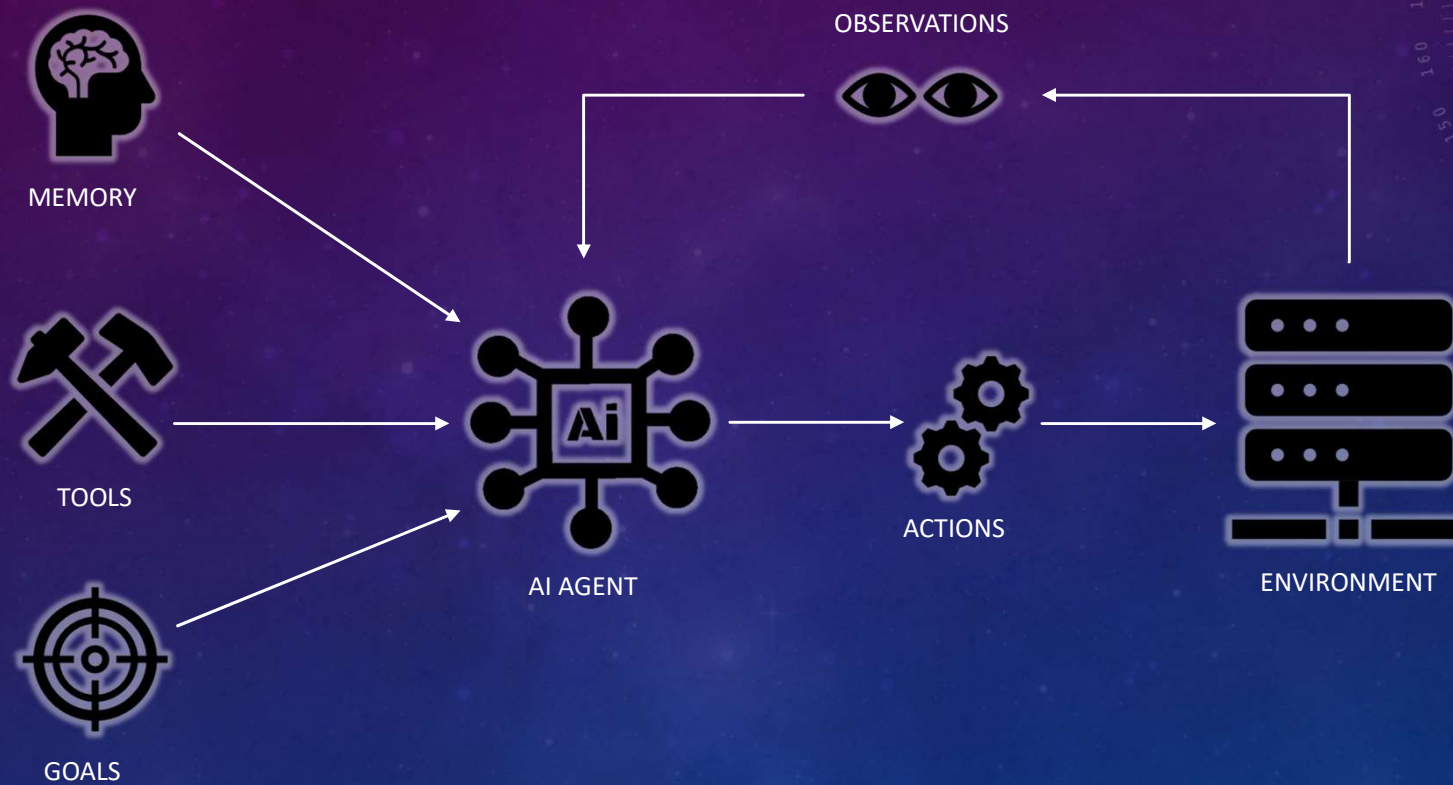
\$93.5B IN FUNDING

\$1.874T IN REVENUE



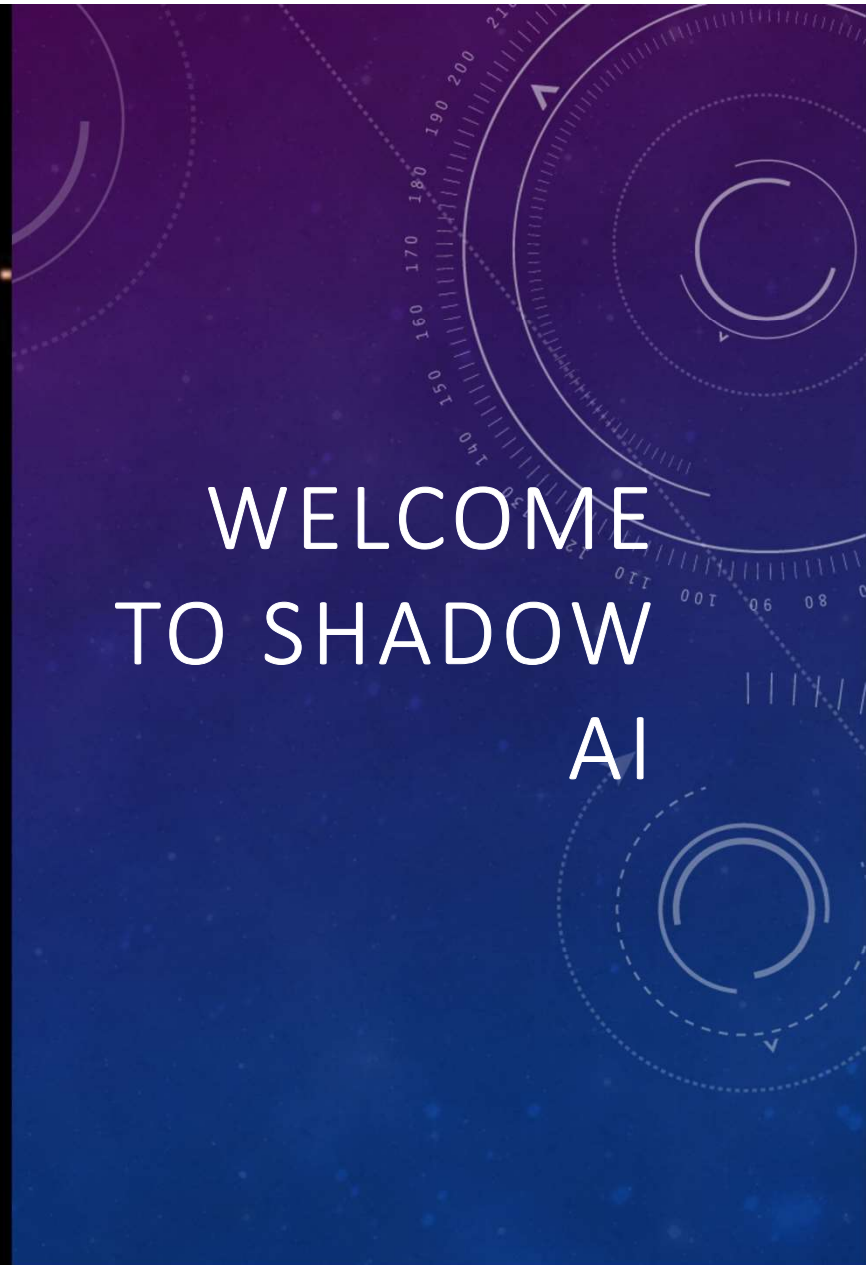
THE FUTURE WILL BE Ai TO Ai

WELCOME TO AGENTIC AI





WELCOME
TO SHADOW
AI





WHAT DOES THIS MEAN TO
CYBERSECURITY?

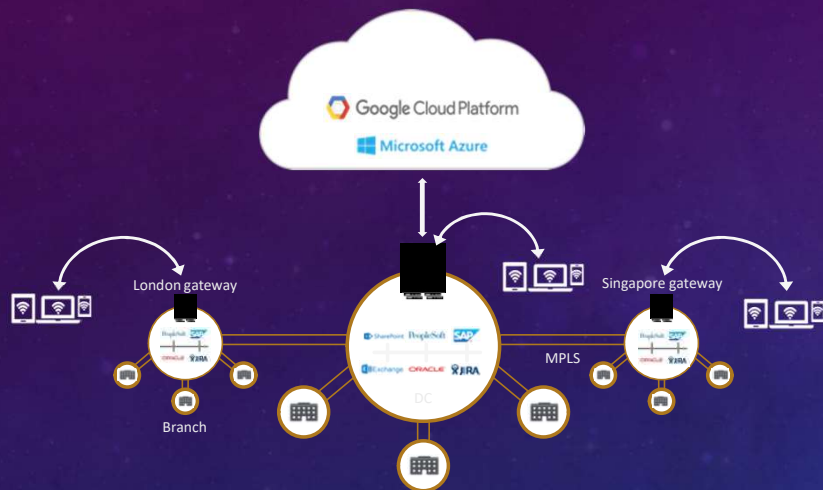
HEADACHES!!!



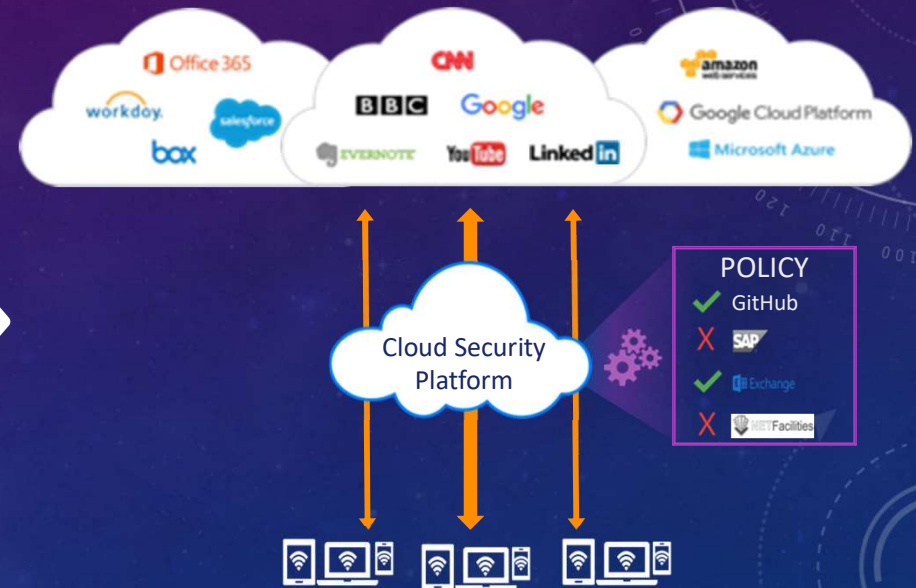
SECURITY TRANSFORMATION: 10 YEARS AGO

FROM: NETWORK-BASED SECURITY

TO: POLICY-BASED ACCESS



Required users to be on the network



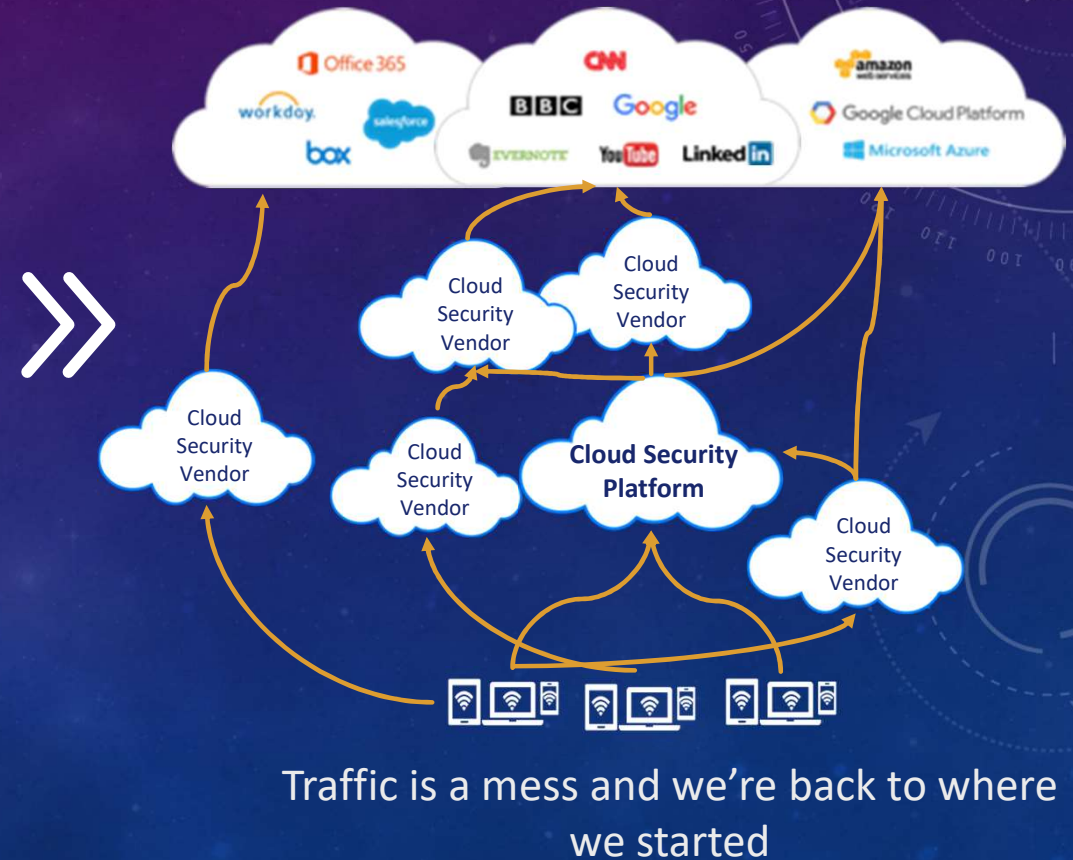
Communications were secured,
network is irrelevant

SECURITY TRANSFORMATION: THE LAST 5 YEARS

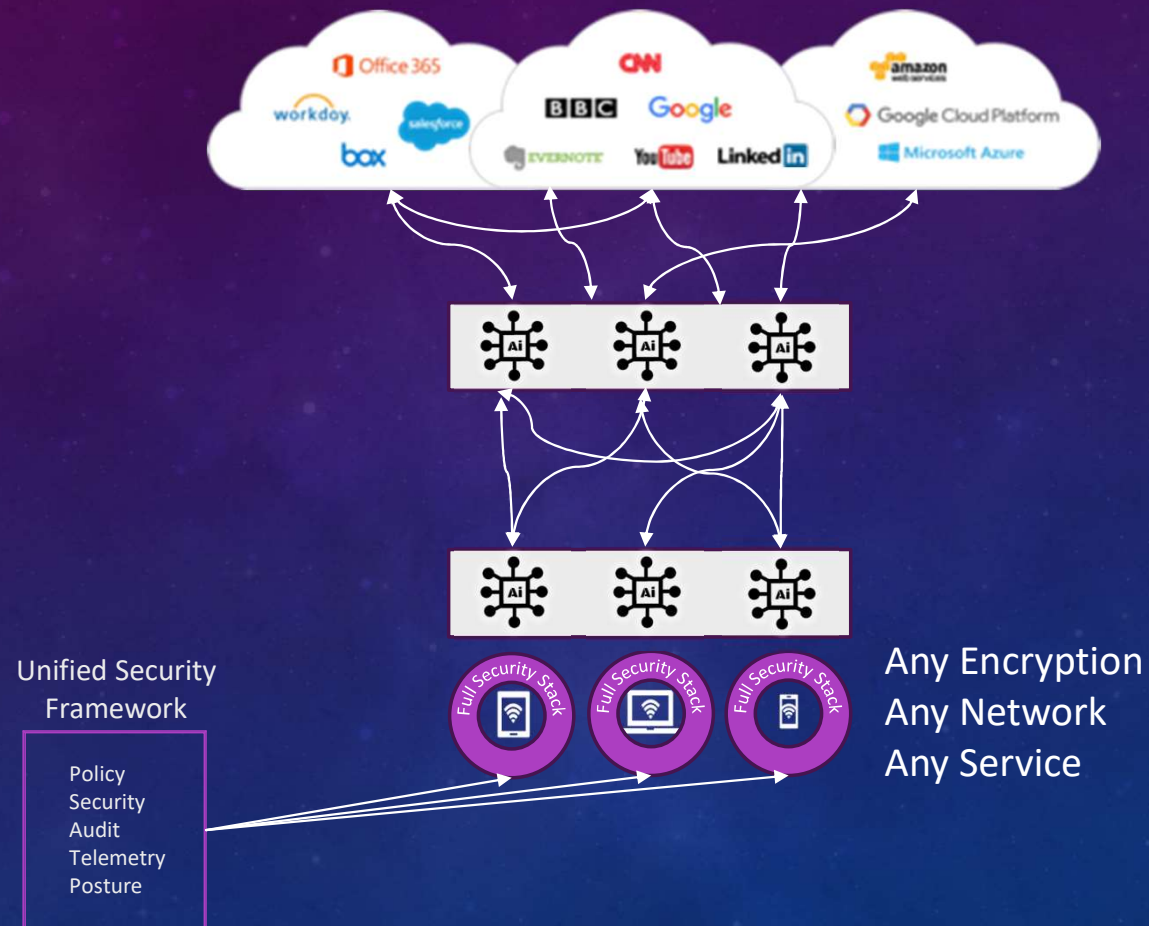
FROM: POLICY-BASED ACCESS



TO: FULL ON CLOUD HOPPING



AGE OF THE HYPER CONVERGED ENDPOINT



The background is a deep blue gradient. In the center, a stylized, low-poly hand in a lighter blue shade holds a circular key. To the right, there are several concentric circular patterns with tick marks, resembling a dial or a clock face. The overall aesthetic is futuristic and technological.

WHAT HAPPENS WHEN WE ADD QUANTUM SAFE
ENCRYPTION?

MORE HEADACHES!!!



UNTIL THEN, WHAT DO WE DO?

WEAK CRYPTOGRAPHY

DATA CLASSIFICATION

QUANTUM RESISTANCE?

FUTURE BREACHES

VENDOR READINESS



WHAT ABOUT THE AI STACK?

BLINDING MIGRAINES!!!





BAD Ai

PHISHING AND VISHING AT SCALE

DEEPFAKES

Vishing, Smishing & Phishing

1,265% ATTACK INCREASE

1,740% INCREASE IN DEEPFAKE

53% SHARE THEIR VOICE

76% LACK FRAUD PROTECTION

3 OUT OF 4 FREE TOOLS FAIL

\$2.7B LOST

MY NAME IS
WERNER BRANDES.
MY VOICE IS MY
PASSPORT.
VERIFY ME



Ai VOICE CLONING

70% CAN'T TELL THE DIFFERENCE

77% LOST MONEY

10% SPOKE TO A ROBOT

36% LOST UP TO \$3K

7% LOST \$5K-\$15K

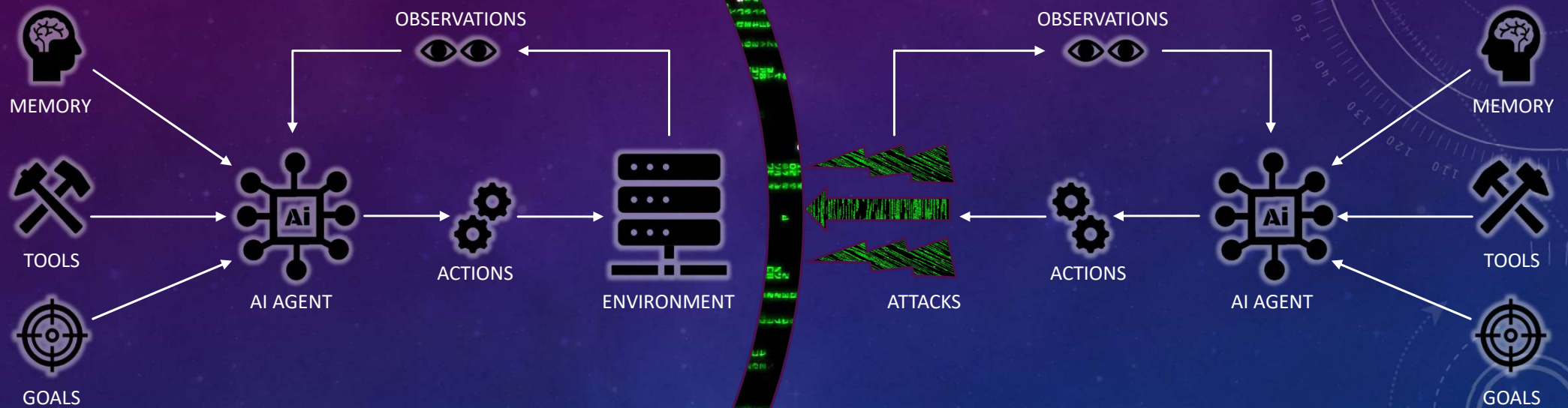
IT GETS WORSE

\$25M DEEPFAKE VIDEO CALL
\$1M RANSOM
**KNOWB4 HIRED A NORTH
KOREAN**

WHEN Ai ATTACKS - Ai DEFENDS



THE FUTURE OF CYBER WILL BE Ai vs Ai



IDENTITY AGENTS

twine

AI SOC

SEVEN^{AI}

AI CODE ANALYZERS

**ENDOR
LABS**

AI POWERED THREAT
INTEL

 **Silobreaker**

AI USER
RISK MANAGMENT

 **Dune**

AI PEN TESTING

 **HORIZON3.ai**
TRUST BUT VERIFY

WHAT DO THESE ALL HAVE IN COMMON?

THE SOC DEFENSE TODAY

INCONSISTENT

SCALABILITY ISSUES

EXPERTISE DEPENDANT

SLOWER RESPONSE TIMES

INCORRECTLY INCENTIVISED

THE SOC DEFENSE TOMORROW

CONSISTENT ANALYSIS

INFINITELY SCALABLE

ENDLESS EXPERIENCE

FASTER THAN HUMAN

AI DOESN'T REQUIRE INCENTIVES...YET

WHAT AM I LOOING
AT THIS YEAR?

IDENTITY AGENTS
AUTONOMOUS TESTING
RE-IMAGING THE SIEM
RUNTIME SENORS
SOC AGENTS
AI (PRODUCT) SECURITY

An abstract painting with a textured, layered appearance. The background is a mix of warm, earthy tones like ochre, tan, and brown. In the foreground, there are vibrant, dark colors including deep blue, purple, and magenta, which appear to be splattered or poured over the base. Faint, circular, technical-looking markings are visible in the upper right and lower left corners, resembling a compass or a stylized clock face. The overall composition is dynamic and layered, suggesting a sense of depth and complexity.

ART OF THE POSSIBLE



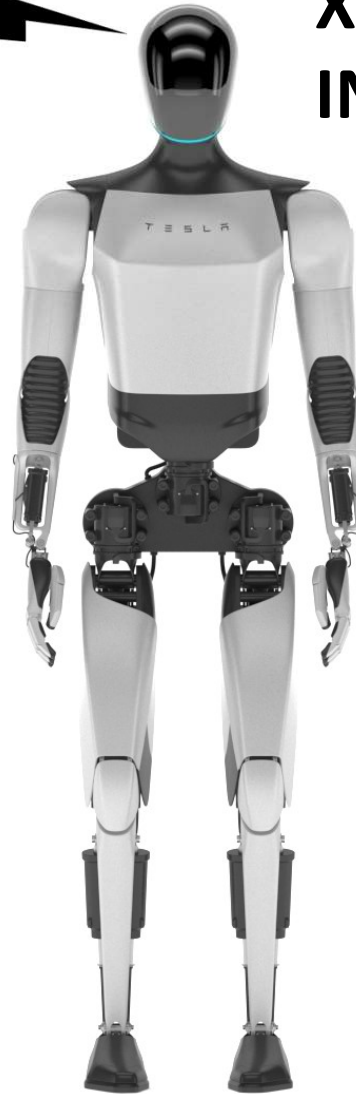
Neuralink



STARLINK
CONNECTED



X Ai
INTELLIGENCE



TELSA VISION

TESLA BATTERY
POWER



**BORING COMPANY
ARMED!!!**



THANK YOU!